

NH fuse switch-discon. size 1, 250 A, panel mounting (33 201)



Description

Article

Part No.: 33 201

QUADRON® Panel

NH fuse switch-discon. size 1, 250 A, panel mounting

connection screw M10

System

Mounting plate

Product group 09

Subgroup 06

pack size 1

EAN 4021267332013

Advantages of the product

For safe connection of the leads, the shock protection is split into 2.

Self-closing inspection holes are available in the cover.

Catalog page 2015 : 6/19

eCl@ss 6.1 27142108

eCl@ss 7.1 27142108

ETIM 4.0 EC001040

ETIM 5.0 EC001040

Approvals

Standards

IEC 60947-1:2007 + A1:2010 + A2:2014

IEC 60947-3:2008 + A1:2012

Approvals

IEC (CB), Germanischer Lloyd, VDE, CCC



Type number: QCB-NH1

CCC certificate: 2012010302563561

Product data

Electrical data

Rated current (IEC): 250 A

Rated voltage (IEC) AC: 690 V

Rated voltage (IEC) DC: 440 V

Utilisation category AC-22B (400V)
AC (IEC 60947-3) : AC-23B (400V/160A)
AC-21B (690V)
AC-20B (1000V) at pollution degree 2

visible information required if used at more than 690V AC: do not switch under load

Utilisation category DC specifications: 2 current paths (L1,L3) in series
DC (IEC 60947-3) : DC-20B (440V)
DC-20B (1000V) at pollution degree 2

visible information required if used at more than 440V DC: do not switch under load

Power dissipation:

The power dissipation at a typical load of 80% of the rated current results to 9 W.
(The power dissipation for operation with rated current would be 14.1 W.)

rated isolation voltage U_i (AC): 800 V
Rated surge voltage U_{imp} : 6 kV
max. permitted voltage (IEC) AC: 800 V
max. permitted voltage (IEC) DC: 800 V

rated peak withstand current I_{pk} : 13.7 kA
cond. rated short-circuit current with fuses: 80 kA / 690 V
approved with fuse links of characteristics: gG
rated short-time withstand current I_{CW} : 8,1kA / 1s

for fuse links IEC 60269-2-1 (I) / DIN VDE 0636-201 size 1 up to 23W power dissipation

Entsprechend den angegebenen AC- und DC- Schalteigenschaften und unter Berücksichtigung der Überlastbedingungen, sind gewisse Abstände zu geerdeten Metallteilen einzuhalten. Nähere Informationen auf Anfrage.

Bei Verwendung als Trennschalter ist die Einhaltung der Abstände nicht erforderlich.

Degree of protection IP30 at front, degree of protection near terminal depends on installation

Mechanical data

W x H x D: 184 x 243 x 112

Weight: 171 kg/100

Poles: 3-pole

front degree of protection: IP30

Terminal points

screw M10

Material properties

Main body: temperature stability 125°C,
self-extinguishing in acc. to UL 94,
creepage resistance CTI 200,
halogen-free

Shock protection cover: temperature stability 125°C,
self-extinguishing in acc. to UL 94,
creepage resistance CTI 200

Handle: temperature stability 125°C,
self-extinguishing in acc. to UL 94,
creepage resistance CTI 200,
halogen-free

Contacts: spring-loaded copper contacts, silver plated

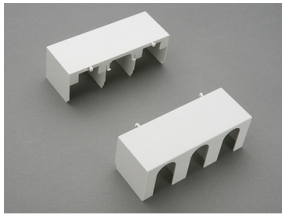
Version

Variant with box terminals: 33 393

Variant with electromechanical fuse monitoring: 33 149

Variant with electronic fuse monitoring: 33 330

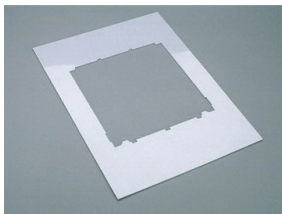
Accessories



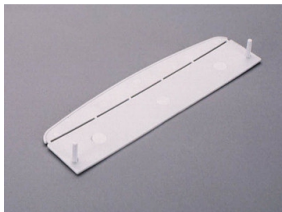
33 142
cover for cable lugs
for NH fuse switch disconnecter size 1



33 145
prism terminal, double
2x 35-70 mm²
size 1



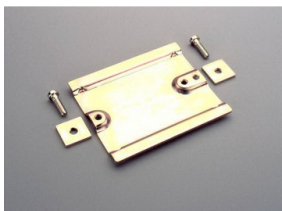
33 152
Trim frame
215 x 330
size 1



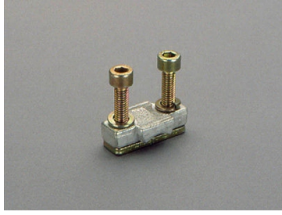
33 155
barrier for handle
for fuse switch-disconnector size 1-3



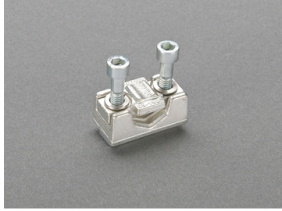
33 157
lid interlock
for sealing wire and padlocks
Size 1 - 3



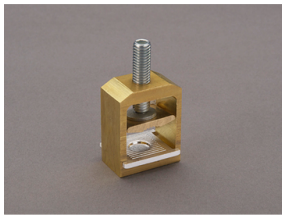
33 158
rapid mounting set
rails centre distance 125 mm or 150 mm
size 1 - 2



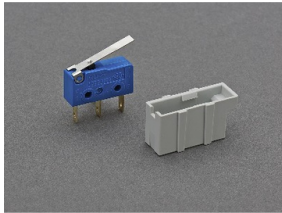
33 163
clamp-type connection
70-150 mm²
size 1



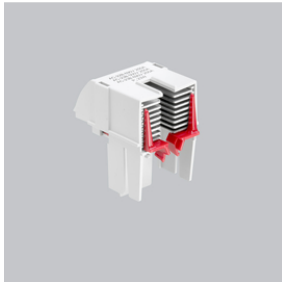
33 166
prism terminal for fuse switch-disconnector
35-150mm², Cu and Al
size 1



33 909
box terminal



33 917
pilot switch for lid position
pilot switch: 1 reversing switch: 250V AC / 5A; 30V DC / 4A
Size 1



33 918
arcing chamber
QCB-NH1